



The Shade Experts

Structure Warranty

Parola warrants to the consumer that any product is free from manufacturer defects in material or workmanship for a period of one (1) years from the date of original purchase when used in compliance with directions as outlined in the manufacturer's instructions, which includes reasonable and necessary maintenance by the consumer.

Failure to follow the given assembly, maintenance and care instructions may void your product warranty.

In case of manufacturing defects in material or workmanship, agrees to, at their discretion, repair or replace any defective product without charge for the warranty period.

To be covered under this warranty, claims and repairs must be made by to the authorized dealer or directly to the manufacturer. As the consumer, you assume all cost incurred in shipping your unit to a repair location specified by them. The repaired unit/parts will be returned to the consumer freight prepaid. Any implied warranty is limited in duration to the one (1) years provided in this, the only, expressed warranty.

EXCLUSIONS:

No responsibility is assumed for incidental or consequential damages. Warranty does not cover any damage due to improper installation, adverse weather conditions, wind, misuse, neglect, lack of reasonable maintenance, or the use of any unauthorized attachments.

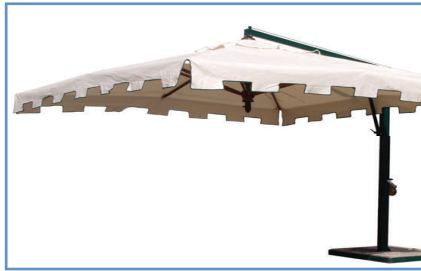
Any damage caused by external force or factors (broken umbrella ribs, punctures, abrasions or burn holes in the fabric etc.) is explicitly excluded from warranty coverage. Warranty is void if unit is subjected to unauthorized service by anyone other than a dealer or themselves.

To avoid damage or personal injury the umbrellas must not be used in strong wind conditions of more than 35mph for cantilever umbrellas or for more than 40mph for center pole umbrellas or in case of heavy rain. Umbrellas must be closed when unattended and/or in bad atmospheric conditions. Umbrellas must be used with the proper base and the amount of ballast weight as specified with each model.

ShadeExpert.com

TheShadeExperts
3101Fairlane Farms Rd
Wellington, FL 33414
TEL 561-422-3200
FAX 561-422-3217

Installation Instructions for the Basic Offset Umbrella

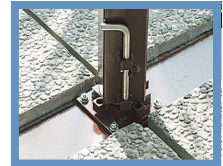


Base assembly – Place the base where it is desired and taking into consideration the size of the canopy allowing room to be opened. (IT'S MORE DIFFICULT TO MOVE THE STRUCTURE WHEN IT'S ALL IN PLACE) Screw bottom leg bolts into the bottom of the base and using a level make sure the base is straight before mounting the main center post.

Mounting the main post – place the center post on the corresponding holes and insert the screws and bolts and tighten with wrench. You can screw the bolts while the center pole is in an upright position or bolt the center post in place on the base by standing the base in a vertical position and lining up the center post vertically and then inserting the bolts. The base and pole can then be tilted back into an upright position when finished.

Attaching the arm – the arm is bolted into place on the post and tightened accordingly into place. Due to the weight of the arm it is recommended that one person holds the arm in place while the other places the bolts and secures the arm.

Place the Stones – in each of the two panels of the base. It is recommended to place a weight of 300lb total weight (3 stones 48lb each per panel) making total of 6 stones. These can be purchased at a “Home Depot” or any other “Building Supply/Garden Store” as they are a standard size of 20x20



inch and usually weigh from 45 to 50lb each.

Attaching the canopy – to arm as shown in photo (DO NOT UNTIE THE CANOPY UNTIL CABLE IS SECURED IN PLACE AND READY TO BE CRANKED OPEN)

Top of canopy is marked and that side should be facing the main post. Placing it this way allows the insertion of the wind arm to the rib which on that particular side has a steel lip that the wind arm is inserted into.

Cable should be run through opening at the top of arm and through the 2 pulleys on the arm as shown before bolting the canopy into place. Once canopy is bolted into place then the adjusting screws can be tightened so as to make the canopy hang straight.



Installing the umbrella cable – once the cable is passed through the top arm and through the two small pulley located on top of the main post follow the figures below to insert the cable into the winch and fasten the end of the cable with the provided small bolt (taped on the winch) and then set into the recessed space inside the winch so that the cable can then be tightly rolled by winding the handle. This allows the cable to stay in place when cranked. Tightly wind the beginning of the cable

by turning the crank and keeping the cable tight with the other hand.

Opening the canopy – Once the cable and the canopy are run you can untie the umbrella canopy and open by turning the handle on the winch.

Attaching the wind arm – Now that the canopy is open the rib closest to the pole should have a small steel lip on the end. Raise the wind arm and applying a little pressure lock it into place on the lip and tighten the hand screw lever so as to keep the wind arm in place.

OPERATING GUIDELINES - The Basic Side Post Umbrellas weighs appx. lbs. once fully assembled. Moving the umbrella fully assembled will increase the risk of damage to your umbrella and can cause serious injury. We recommend a two-person team to dismantle umbrella before moving or placing into storage.

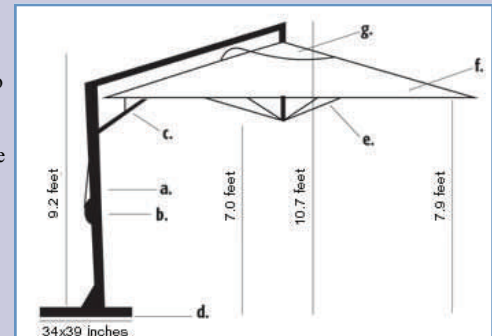
We recommend that you always close your umbrella in windy conditions as well as when not in use to avoid damage to your umbrella frame and outdoor furniture. Follow the manufacturer's instructions regarding umbrella placement and base weight to insure stability of your umbrella. Wind Damage is NOT covered under any umbrella warranty.

NOTE: The umbrella must not be used in strong windy condition; more than 35mph for cantilever umbrellas and more than 42mph for central pole umbrellas, or in case of heavy rain.

To avoid personal injury, umbrellas must be closed and removed when unattended and/or in bad weather conditions.

Install umbrella on even ground with the corrected weighted base.

WARRANTY - Parola Umbrellas are guaranteed for ONE FULL YEAR to be free from defects in original material and workmanship. If a defect in the original material or workmanship appears during the warranty period; Parola srl. (at its option) will replace or repair your product without charge. Damage caused by neglect or abuse are not covered under the warranty. Contact your local dealer where the product was purchased for return information.



“Bring Home The Mediterranean”